

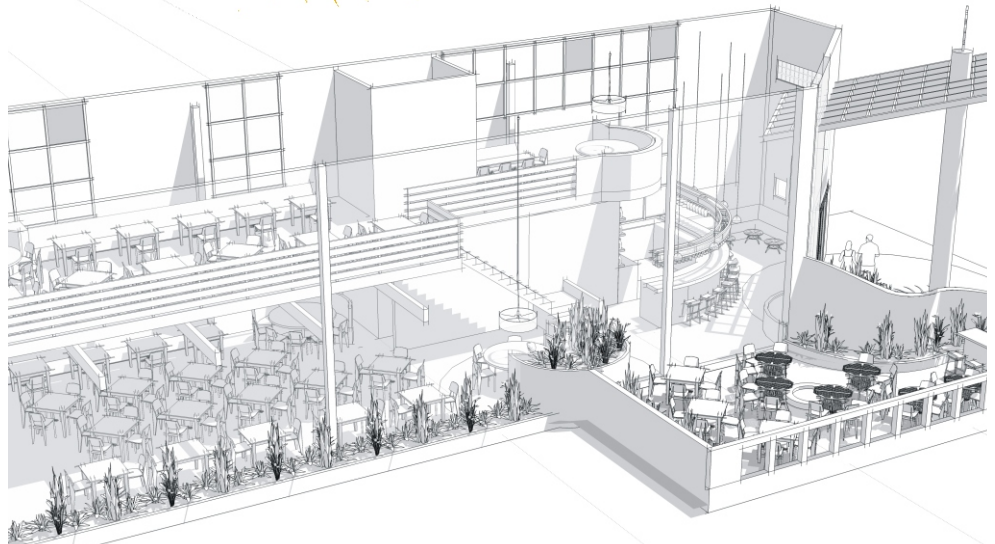
The Project

El Camino was more than just a new business when we began our partnership with them. It was a completely new restaurant concept for the area: an upscale but casual Mexican-inspired cantina and restaurant. KRS is now helping bring the concept to reality.

El Camino's owners envision a place that is smart, fun, playful and neighborly. KRS is playing a lead development role in all aspects of design including exterior and interior, logo / branding, graphics, custom furniture and lighting, decor and signage.

The new restaurant is slated to open in early 2007 and we can't wait to make a toast at the grand opening. Ole!

El Camino Restaurant



○ Highlights

Client: Hancock Group - Lansdale, PA

Scope: Design including Branding, Visual Merchandising, Interior & Exterior Design

Timeline: 1 year - concept to installation

Design: KRS, Inc

Production: KRS, Inc

Installation: KRS, Inc



king | retail solutions

www.kingrs.com

T 800.533.2796
541.686.2848
F 541.686.8418

3850 W 1st Ave
PO Box 21910
Eugene OR 97402